

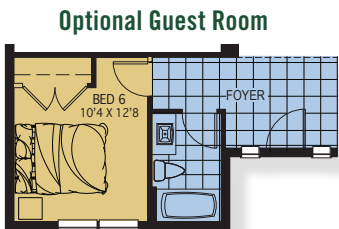
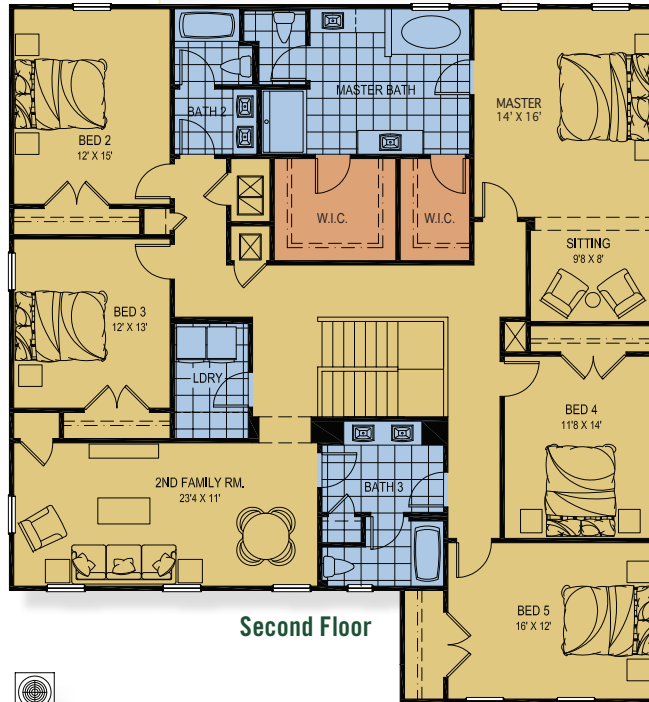
# The Osceola

- 6 Bedroom
- 3.5-4 Bath
- 4,926 (a/c living)



**SQUARE FOOTAGE:**

First Floor A/C:	1,547 sq.ft.
Second Floor A/C:	2,352 sq.ft.
<b>TOTAL A/C LIVING:</b>	<b>3,899 sq.ft.</b>
Entry Porch:	50 sq.ft.
Covered Lanai:	160 sq.ft.
GaragePlus Garage:	817 sq.ft.
<b>TOTAL:</b>	<b>4,926 sq.ft.</b>



★ Floor plan shown with **GaragePlus**

**Our Legacy is Building Yours**



\*Please consult your Hanover New Home Advisor for information on community and homesite availability. Plans and elevations are artist's renderings and may contain options which are not standard and may not be available on all models, model types or homes. Developer reserves the right to make changes to these floor plans, specifications, dimensions and elevations without prior notice. Stated dimensions and square footage are approximate and should not be used as representation of the home's size. Square footage calculations are from the outside of exterior walls and include interior partition walls. Due to normal construction tolerances, square footages and dimensions may vary from those shown on floor plans or otherwise indicated. Furniture layouts are for illustration purposes only. Prices, promotions, features, amenities and availability subject to change without notice. CGC#1507971. Copyright ©2018 Hanover Family Builders. All rights reserved.